

SEAFARERS' IDENTITY DOCUMENT ISSUANCE

FACILITATING TRAVEL — BUILDING ECONOMIES

Seafarers make an important contribution to the economy of any Nation. Being issued a Seafarers' Identity Document (SID) will allow them to fully participate in international trade while enjoying the rights and privileges, including visa-free travel, accorded to them under Convention No. 185 (C.185) of the International Labour Organization (ILO).

The new electronic Machine Readable Travel Document (eMRTD) must be compliant not only with C.185, but also with international standards for such documents which are set by the International Civil Aviation Organization (ICAO) and laid out in the ICAO Document 9303 publication. To address these very specific requirements, many countries are seeking out trusted partners with the appropriate industry experience and credentials to ensure C.185 and ICAO compliance for their SIDs to abide by international law and ease travel for their seafaring citizens.

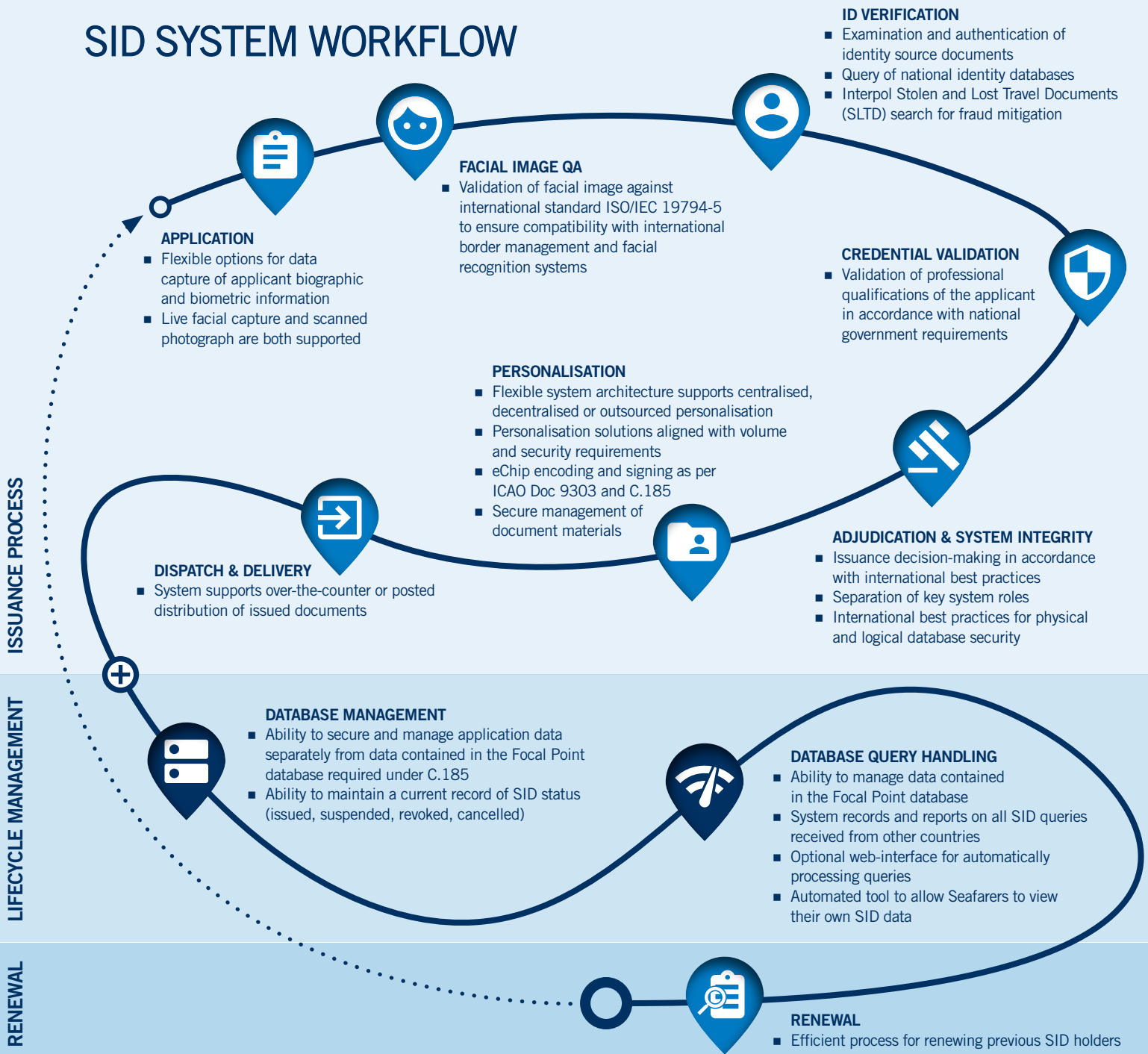


The global number of seafarers is estimated at 1,647,500
BIMCO-ICS Manpower Report 2016

WORLDREACH - ENSURING STANDARDS COMPLIANCE

The WorldReach SID system supports all phases of secure travel document issuance such as data capture, entitlement and identity processing, scanning, tracking and printing of secure travel documents. The system incorporates business rules for document issuance authorities which are used to handle the initial receipt, sorting and distribution of SID applications and generate dynamic checklists that help guide users through application processing and approval. The SIDs produced by the system exceed all international standard requirements with an abundance of security features to guard against the possibility of counterfeits or improperly issued documents. The WorldReach system also meets the additional requirements of C.185 by facilitating the Issuance Agency's ability to respond to queries made to the 24/7 focal point required under the Convention.

SID SYSTEM WORKFLOW




All SIDs produced by the WorldReach issuance system are C.185 and ICAO Doc 9303 compliant, contain a range of appropriate security features and are issued by a system with integrity “baked-in” to make both internal and external fraud very challenging. The system applies business rules during the entry of the application and uses dynamic checklists to ensure proper completion of tasks according to user profiles or defined roles. Built-in functionality ensures that the correct checks are performed for entitlement, including the confirmation that all required information, photographs and fees. A set of checks is incorporated to establish evidence that the applicant is the person whose identity is claimed on the application form and determination is made whether a person is entitled to an SID and whether there are any risk indicators that require further investigation before approving an application. The secure centralised or decentralised production and distribution of SIDs is fully accounted for integrating precise quality controls, inventory controls and tracking. Lifecycle management, database queries and renewal processes are all a part of this full featured issuance system.

WHY WORLDREACH?

Over the last 20 years, WorldReach's secure travel document issuance solutions have been used to process over two million national-level identity document applications and is now processing applications for more than 300,000 secure ICAO compliant travel documents per year. Our clients have found using a commercial-off-the-shelf product has many advantages over highly customised software. When many clients use nearly identical versions of the software, this allows for suggestions, lessons learned, best practices, enhancements and upgrades to be shared across the entire user community.

As much as the software application and technical environment is important, it is perhaps even more important that your technology partner understands your unique requirements and operating environment. WorldReach also has current identity document experience with many government clients, each of which issue from a few hundred to ten thousand documents annually, which is very comparable to the needs of many nations with an SID requirement.

Regardless of the number of SIDs to be issued yearly, ISO 9001-2015 certified WorldReach has proven itself to be a trusted technology partner familiar with all the rigors of secure travel document authentication and identity verification, delivering national-level identity documents for more than two decades.



WorldReach Software helps ensure traveller safety and security worldwide through its systems for government immigration, border management and consular organizations as well as individual travellers. Incorporating Know Your Traveller™ (KYT) traveller process innovation, WorldReach supplies consular, passport and eVisa/Electronic Travel Authorization software and fosters best practices serving more than 160 million citizens worldwide. Customers include governments of Canada, the United Kingdom, the Netherlands, New Zealand, Ireland, Denmark, Anguilla, Bermuda, Cayman Islands, Montserrat, St Helena, Turks and Caicos Islands and the British Virgin Islands.

© 2018 WorldReach Software Corporation

V 1.0



REACHING TRAVELLERS AND CITIZENS ABROAD

WorldReach Software Corporation
2650 Queensview Drive, Suite 250
Ottawa, ON, K2B 8H6 Canada
T: +1-613-742-6482

www.worldreach.com